



**297 Medford St
Somerville, MA
Affordable Housing
Project**

**Somerville Affordable Housing Trust Fund
December 12, 2024**



Development Team

Just A Start is a nonprofit organization whose mission is to promote equity by creating access to stable housing and building pathways to economic opportunity.

Somerville Community Land Trust is an independent, community-based nonprofit organization. Its mission is to build community power and stability in Somerville by acquiring residences and land and making them permanently affordable.



Site Information

\$3.45m acquisition price

Excellent location - Somerville
Community Path, Somerville Public
Library, Somerville High School, Gilman
Square Station, Central Hill Playground

Anticipated environmental
remediation

Adjacent to existing Just A Start
property at 301 Medford Street



Next Step Housing

301 Medford Street Somerville

Just A Start developed 301 Medford Street, completing construction in 2005.

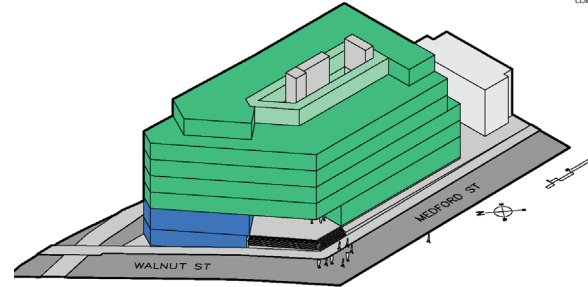
6 affordable apartments, including 3 service-supported transitional units for young families who have been residents of a teen living program

Land donated by the City of Somerville;
Financing provided by Somerville Affordable Housing Trust

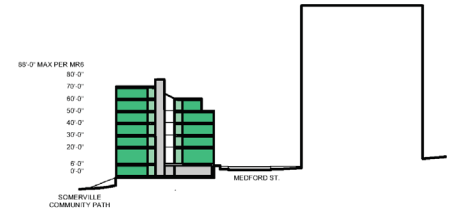


Project Information

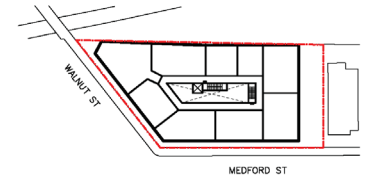
- ~50 units
- 100% affordable
- Ground floor amenity/community space
- Serving 30-60% AMI residents
- Anticipate pursuing a zoning map change.



3D Massing Study



Site Section Study

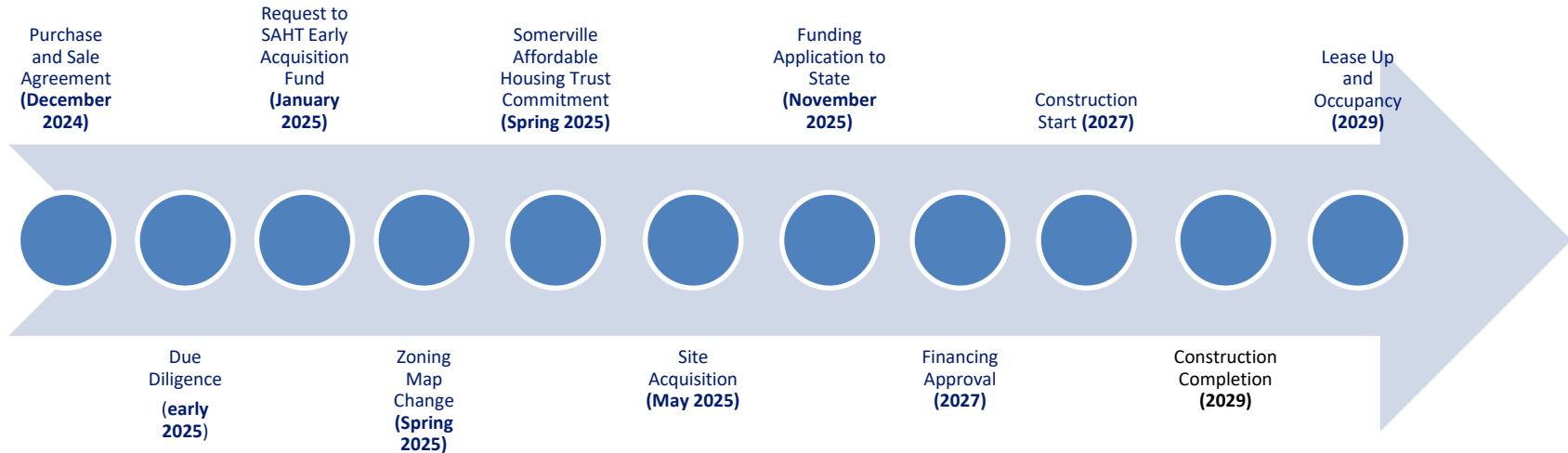


Typical Floor Plan Study

Conceptual design by Machado Silvetti



Projected Timeline



Questions and Comments

Connor Ring
Project Manager, Just A Start
connoring@justastart.org
617-918-7559

Ben Baldwin
Executive Director, SCLT
Ben.baldwin@somervillecommunitylandtrust.org
857-756-5104

Noah Sawyer
Director of Real Estate, Just A Start
noahsawyer@justastart.org
617-918-7516

